



# INDOFINE Chemical Company, Inc.

121 Stryker Lane, Bldg. 30, Suite 1 • Hillsborough, NJ 08844 • U.S.A.

Phone: (908) 359-6778 • FAX: (908) 359-1179

website: [www.indofinechemical.com](http://www.indofinechemical.com)

e-mail: [chemical@indofinechemical.com](mailto:chemical@indofinechemical.com)

## CERTIFICATE OF ANALYSIS

Catalog Number: 17-201

Product Name: **5'-CHLORO-2'-HYDROXYPROPIOPHENONE**

CAS Number: [2892-16-2]

Lot Number: 0205132

Chemical Formula: C<sub>9</sub>H<sub>9</sub>ClO<sub>2</sub>

Molecular Weight: 184.62

Melting Point: 55-57°C

Appearance: White crystalline powder

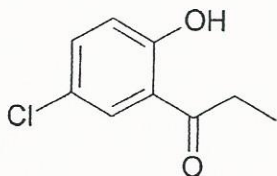
Solubility: Soluble in Chloroform

TLC: n-Hexane:Ethyl acetate (8:2)

NMR Spectrum: Enclosed (conforms to the structure)

Storage: Store in a cool, dry place. Protect from light.

Purity(HPLC): 99.30%





# INDOFINE Chemical Company, Inc.

121 Stryker Lane, Bldg. 30, Suite 1 • Hillsborough, NJ 08844 • U.S.A.

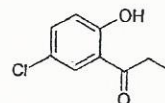
Phone: (908) 359-6778 • FAX: (908) 359-1179

website: [www.indofinechemical.com](http://www.indofinechemical.com)

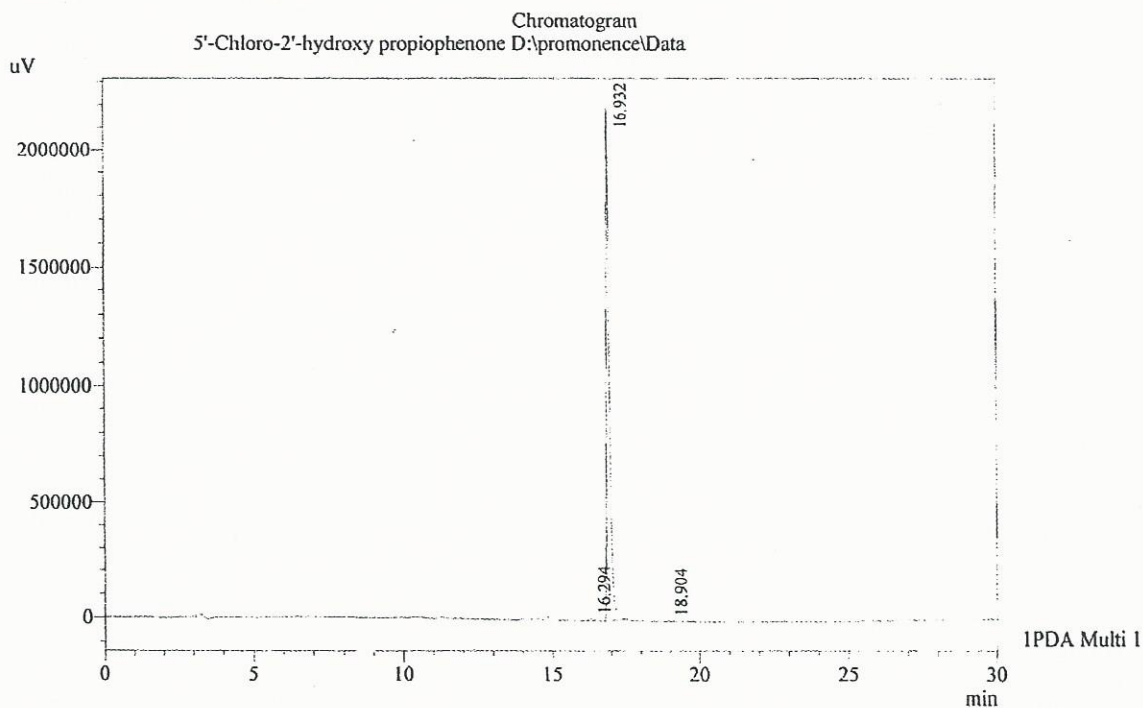
e-mail: [chemical@indofinechemical.com](mailto:chemical@indofinechemical.com)

## HPLC ANALYSIS

Acquired by	: Admin	Catalog No.:	17-201
Sample Name	: 5'-Chloro-2'-hydroxy propiophenone	Product Name:	5'-Chloro-2'-hydroxypropiophenone
Sample ID	: Lot no:205102	Lot No.:	0205132
Injection Volume	: 20 uL		
Data Filename	: 160615F.lcd		
Method Filename	: Linear Gradient.M.lcm		



Column	: LUNA C-18, (250mm x4.6mm 5.0μ)
Flow	: 1.000 mL/min.
Mobile Phase	: A(0.05% TFA in Water) B(Acetonitrile)
	0.01 90 10
	12.0 10 90
	20.0 10 90
	23.0 90 10
	30.0 90 10
Diluent	: Acetonitrile



1 IPDA Multi 1 / 230nm 4nm

PeakTable

PDA Ch1 230nm 4nm

Peak#	Name	Ret. Time	Area	Area %	Relative Retention Time
1	RT:16.294	16.294	74858	0.47	0.96
2	5'-Cl-2'-OH propiophenone	16.932	15962687	99.30	1.00
3	RT:18.904	18.904	37346	0.23	1.12
Total			16074892	100.00	



# INDOFINE Chemical Company, Inc.

121 Stryker Lane, Bldg. 30, Suite 1 • Hillsborough, NJ 08844 • U.S.A.

Phone: (908) 359-6778 • FAX: (908) 359-1179

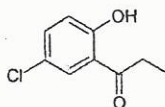
website: [www.indofinechemical.com](http://www.indofinechemical.com)

e-mail: [chemical@indofinechemical.com](mailto:chemical@indofinechemical.com)

Catalog No.: 17-201

Product Name: 5'-Chloro-2'-hydroxypropiophenone

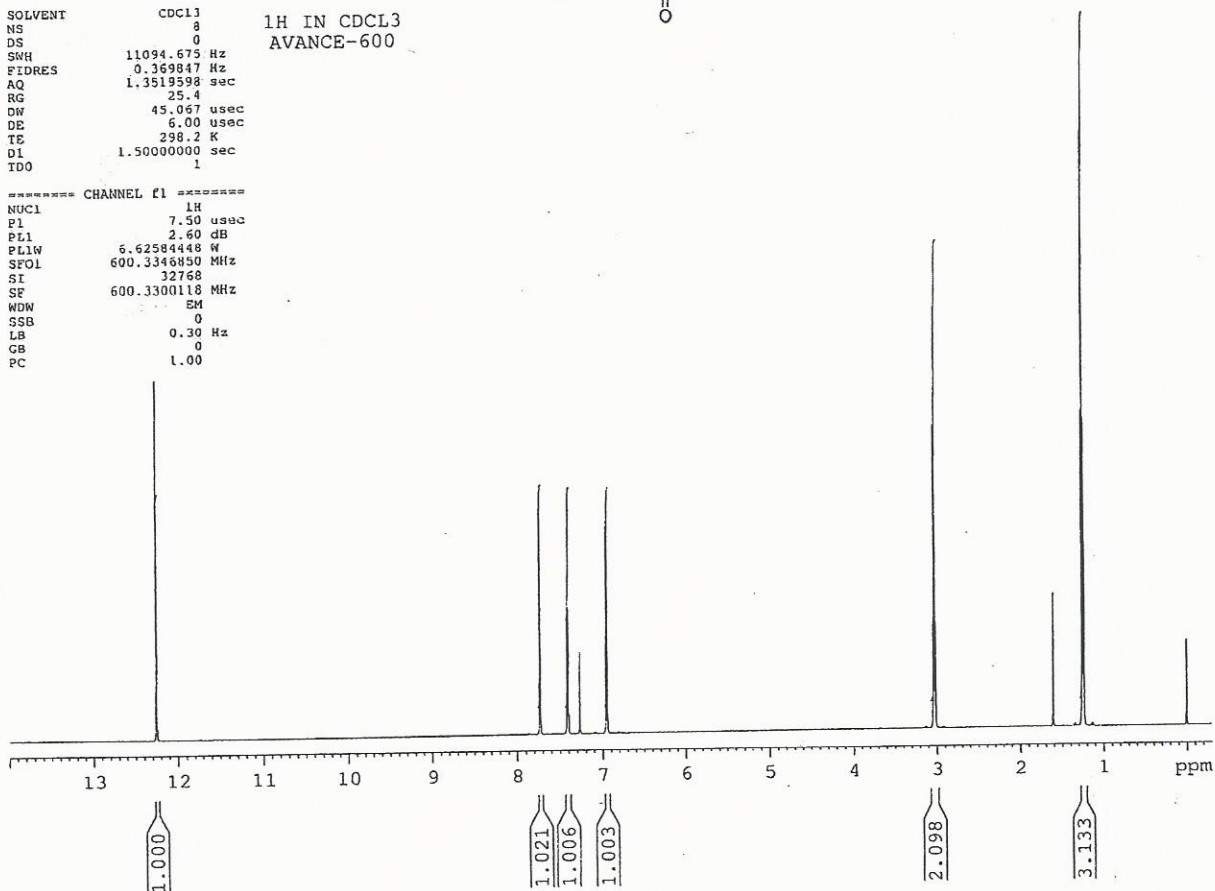
Lot No.: 0205132



SOLVENT CDCL3  
NS 3  
DS 0  
SMH 11094.675 Hz  
FIDRES 0.369847 Hz  
AQ 1.3519598 sec  
RG 25.4  
RW 45.067 usec  
DE 6.00 usec  
TE 298.2 K  
D1 1.5000000 sec  
TD0 1

1H IN CDCL3  
AVANCE-600

===== CHANNEL f1 =====  
NUC1 1H  
P1 7.50 usec  
PL1 2.60 dB  
PL1W 6.62584448 W  
SFOL 600.3346850 MHz  
SI 32768  
SF 600.3300118 MHz  
WDW EM  
SSB 0  
LB 0.30 Hz  
CB 0  
PC 1.00





# INDOFINE Chemical Company, Inc.

121 Stryker Lane, Bldg. 30, Suite 1 • Hillsborough, NJ 08844 • U.S.A.

Phone: (908) 359-6778 • FAX: (908) 359-1179

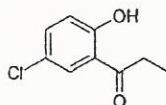
website: [www.indofinechemical.com](http://www.indofinechemical.com)

e-mail: [chemical@indofinechemical.com](mailto:chemical@indofinechemical.com)

Catalog No.: 17-201

Product Name: 5'-Chloro-2'-hydroxypropiophenone

Lot No.: 0205132



SOLVENT CDCL3  
NS 8  
DS 0  
SMH 11094.675 Hz  
FIDRES 0.369847 Hz  
AQ 1.3519598 sec  
RG 25.4  
DW 45.067 usec  
DE 6.00 usec  
TE 298.2 K  
D1 1.5000000 sec  
TD 1

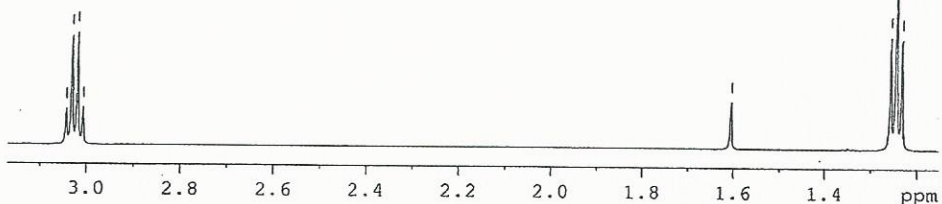
===== CHANNEL F1 =====  
NUC1 1H  
P1 7.50 usec  
PL1 2.60 dB  
PL1W 6.62584448 W  
SFO1 600.374850 MHz  
SI 32768  
SF 600.3300118 MHz  
WDW EM  
SSB 0  
LB 0.30 Hz  
GB 0  
PC 1.00

3.043  
3.031  
3.019  
3.007

1H IN CDCL3  
AVANCE-600

1.604

1.256  
1.244  
1.232



7.729  
7.724

7.416  
7.412  
7.402  
7.398

7.266

6.954  
6.939

